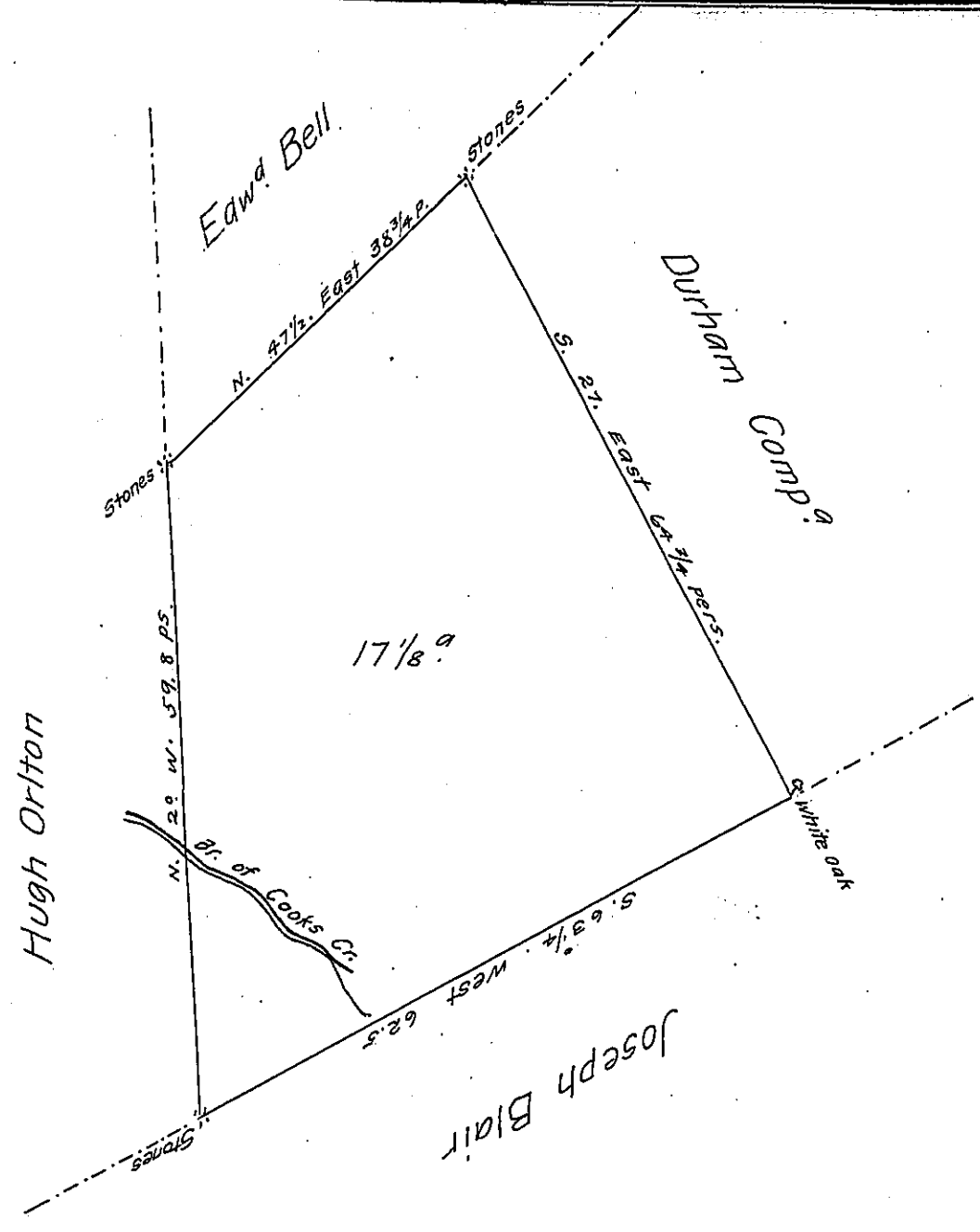


FORM No. 1.



A Draft of Seventeen acres & 20 perches of Land & allowance at 6 per Cent for Roads &. Situate in the Township of Springfield in the County of Bucks, Surveyed to Robert Sherley the 27th. of November 1758 in Virtue of a Warrant of the 25th. Instant.

p. J. Watson junr.

IN TESTIMONY that the above is a copy of the original remaining on file in the Department of Internal Affairs of Pennsylvania, made conformably to an Act of Assembly approved the 16th day of February, 1833, I have hereunto set my Hand and caused the Seal of said Department to be affixed at Harrisburg, this twentieth day of December 1906

Laach Brown
Secretary of Internal Affairs.